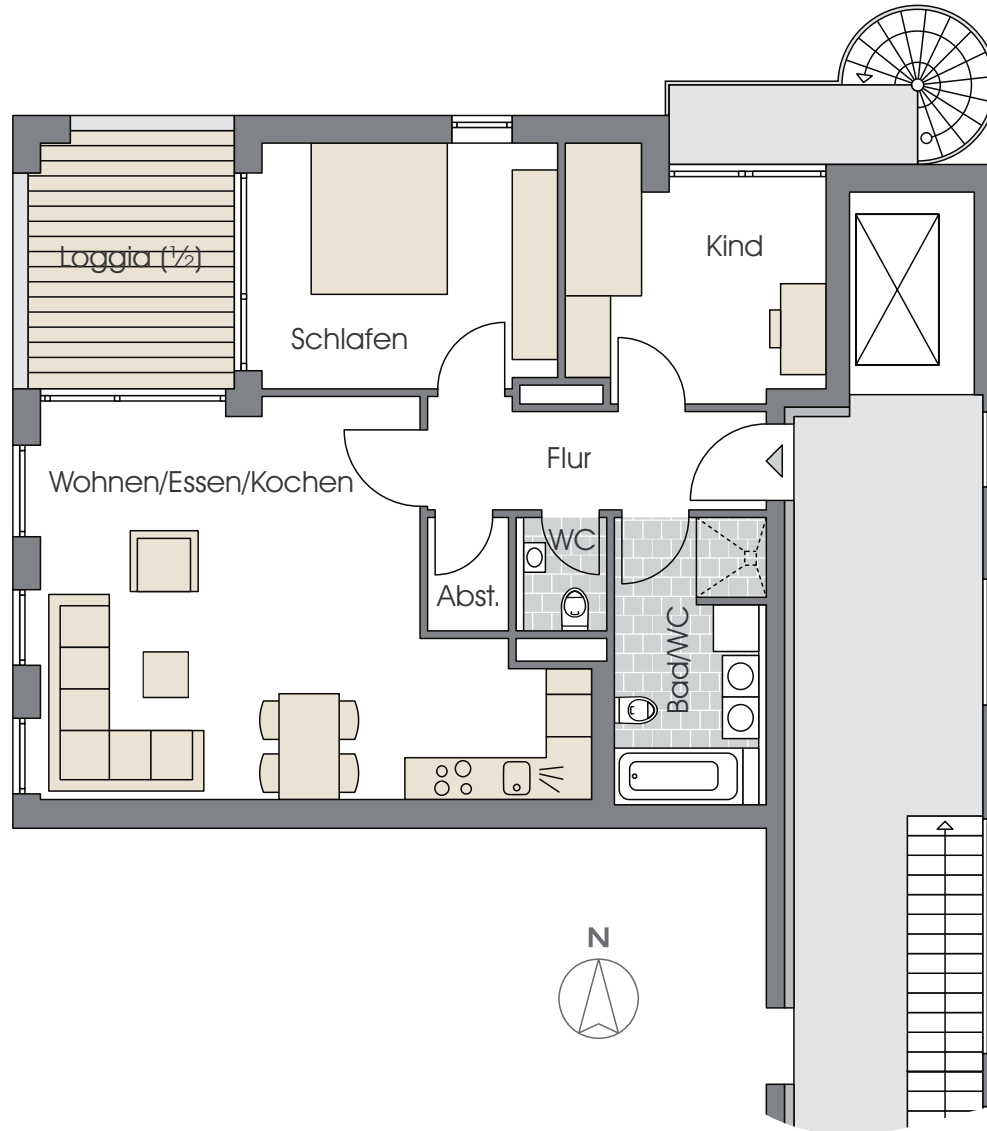


HAUS A

WOHNUNG A1.1

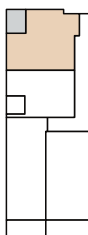
1. Obergeschoss
3 Zimmer



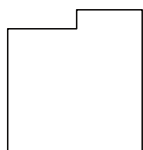
Wohnen/Essen/Kochen	31,22 m ²
Schlafen	13,23 m ²
Kind	10,13 m ²
Bad/WC	7,34 m ²
WC	1,72 m ²
Flur	5,87 m ²
Abstellraum	1,53 m ²
Loggia (1/2)	4,49 m ²

Gesamt	75,53 m²
---------------	----------------------------

Haus A



Haus B



Unverbindliche Illustrationen, Maßstab ca. 1:100